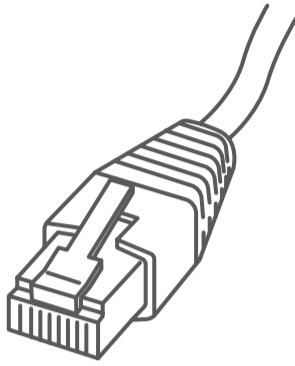


Stand-Alone Network Printer

MAC Installation Instruction

Network Printer Connection



Read Now BEFORE you unpack your equipment

[Continue reading below](#)



Right, let's get your Network Printer up and running quickly...

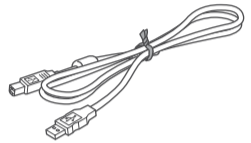
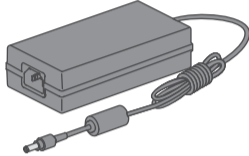
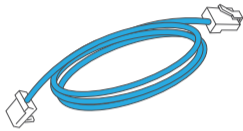
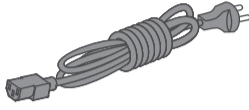
Let's first get together the things you will need:

- The box containing your Network Printer.
- A Mac on which you have full admin rights to allow downloading and installing software.

1. Opening the box and unpacking.

Here's a diagram and explanation of the items you should find in your box.

Printer



Network Cable

Power Cord

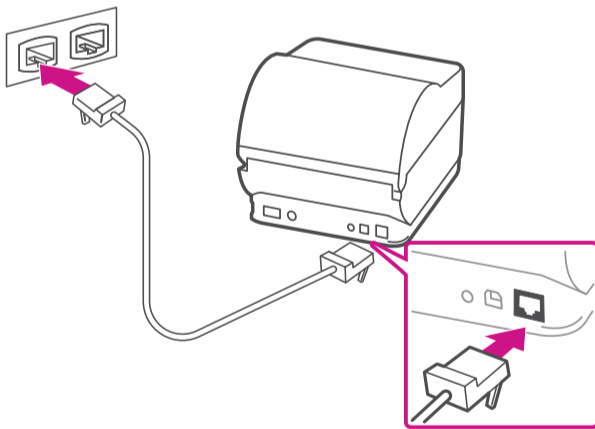
USB
(not used
for network
installation)

2. Connecting the printer.

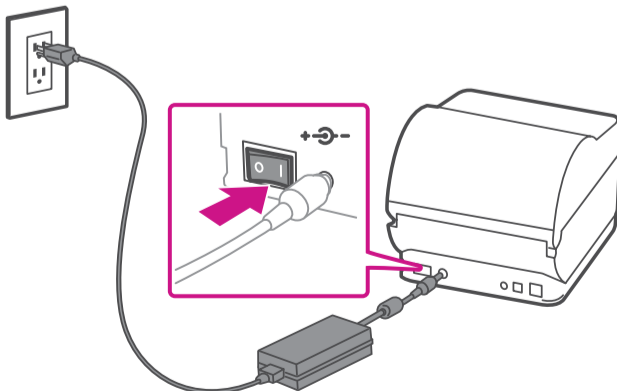
Connect your Network cable to your printer and Network socket.

Connect the power cord and adapter to your printer (as shown) and switch on.

Network Cable

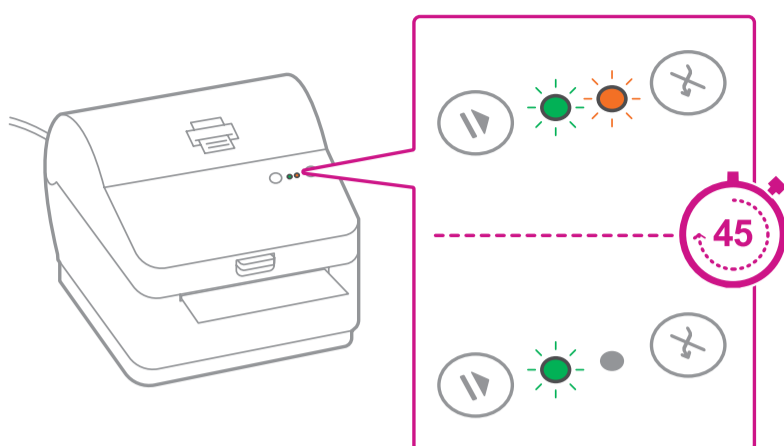


Power Cable



3. Printer ready.

Wait for approximately 45 seconds until the green light remains constant and the printer is ready.

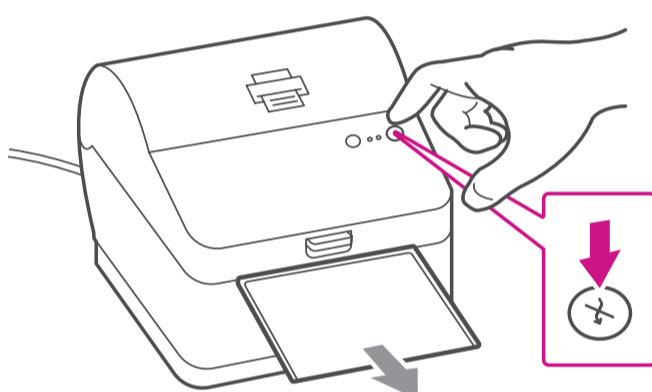


4. Aligning the label roll.

Press the (X) button and check that the label feeds out correctly.

Note: If the label does not feed correctly please refer to label alignment instructions inside the printer top cover.

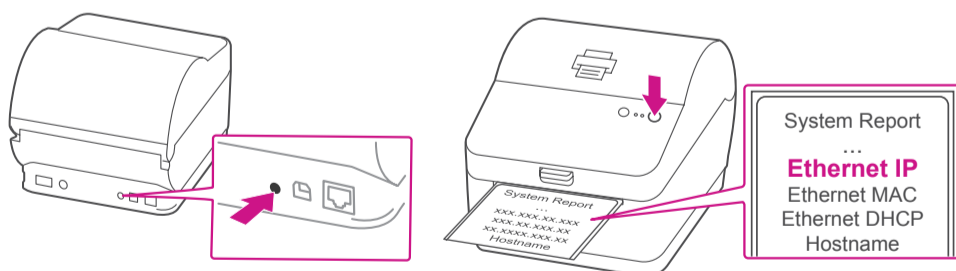
Tear off the correctly dispensed label.



5. Printing a system report.

Print the System Report to obtain the IP address assigned to the label printer.

1. To print the system report simultaneously press the (X) button on the front of the label printer and the recessed button on the back of the printer with a suitable object such as a pencil or similar.
2. Keep the printed report that will be needed later in the installation process.



6. Downloading the printer driver.

1. Click [here](#) to download driver for Workstation w1110.
2. Select  in the Download your Mac printer driver section.
3. Click on the driver **gutenprint-5.2.12-pre4.dmg** file.
4. Double click on the **gutenprint-5.2.12-pre4.pkg** file.
Note- If the 'Software can't be opened because Apple cannot check it' error pops up
5. Select **OK**
6. Right Click the file and select **Open**.
7. Select **Open**.
8. Select **Continue**.
9. Select **Install**.
10. Enter the **User Name** and **Password**.
11. After driver installation, The installation was successful message will be shown. Select **Close**.
12. Select **System Preferences** from the **Apple** menu.
13. Open **Printers & Scanners**.
14. Select the **plus sign +** to add a printer.
15. At the top of the window, select **IP**.
16. In the **Address** field, enter the IP address of the w1110 printer you identified earlier.
17. From the **Protocol** menu, select **HP Jetdirect – Socket**.
18. Leave the **Queue** field blank.
19. (Optional) To rename the printer, enter the desired name in the **Name** field.
20. Make sure **Datamax-ONeil w1110-CUPS+Gutenprint v5.2.12-pre4** is selected in the **Use** menu, and click **Add**.
21. Once the driver software is installed, click **Open Print Queue**, and select the **Printer** tab at the top of the screen, and click on **Print Test Page** to print a test page.

When printing shipping labels on the w1110 printer:

- In the Safari printer dialog box, you must select 4x6 in label from the Paper Size menu.
- In the Adobe PDF printer dialog box, you must select the Choose paper source by PDF page size box before printing.



If you're still having trouble, then visit support.pb.com/workstation and select Errors & Troubleshooting.



* A W 3 2 6 6 4 R E V B *

AW32664 Rev. B 03/21
©2021 Pitney Bowes Inc.
All Rights Reserved

pitney bowes 

3001 Summer St.
Stamford, CT 06926
www.pitneybowes.com