

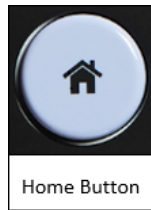
Riso ComColor FW/GD/X1 Pre-Check

Before using your Riso ComColor after a long period of non-use

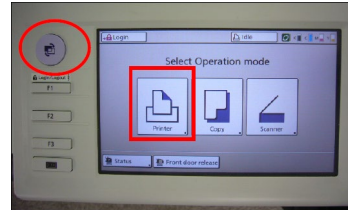
- Turn machine ON
- Wait until machine is finished warming up and in idle mode.
- Press the round [Home button] located on the lower left-hand corner [GD/FW] [Mode button] upper left-hand corner [X1] of the control panel to return to home screen.



FW/GD

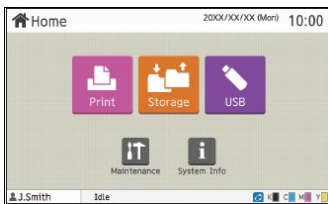


Home Button
FW/GD/X1

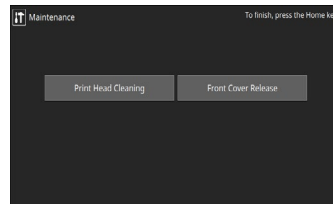


X1

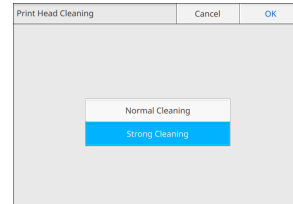
- On FW/GD Perform machine Strong Head cleaning. From the home screen press [**Maintenance**] follow by [**Head Cleaning**] select [**Strong Cleaning**] and press OK



FW/GD

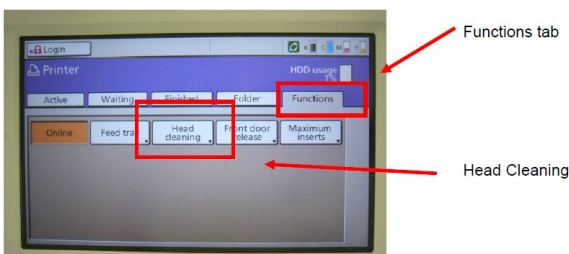


FW/GD

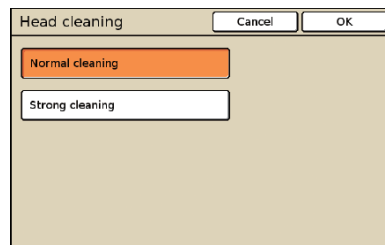


FW/GD

- On X1 select [**Functions**] [**Head Cleaning**] and choose [**Normal cleaning**] or [**Strong cleaning**] and [**OK**]



X1



X1

- Test machine by running live jobs

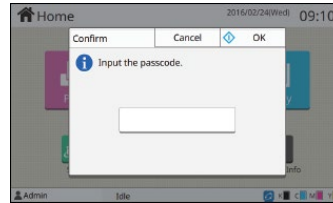
If image output is not satisfactory on the FW/GD continue to next step. (not available on X1)

Riso ComColor FW/GD/X1 Pre-Check

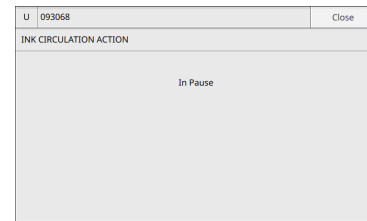
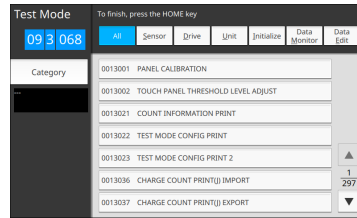
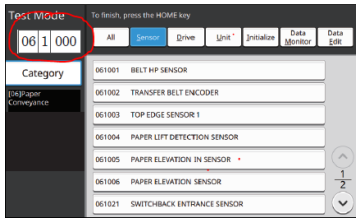
FW/GD Only

CAUTION: Certify that the ink cartridges are not near empty

- From the Home Screen, enter machine Test Mode area, using numeral keypad, press and hold [*] [8] [#] until passcode is requested. Enter (3214) as passcode and press OK.



- Using keypad, enter TM 09-3-068 press [start] key then [start] again to initiate **Ink Circulation**
This Test Mode will take approximately 10 minutes to complete



- Once the TM09-3-068 has completed, exit machine Test Mode area by pressing [STOP- red round button] followed by the [Round Home button].
- Test machine by running live jobs